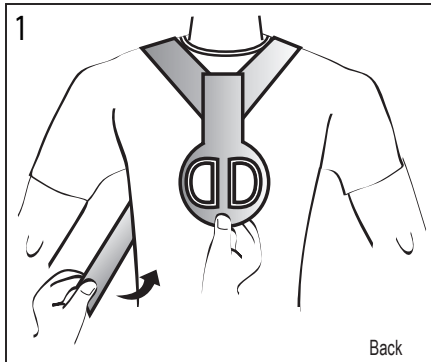


# Clavicle Support

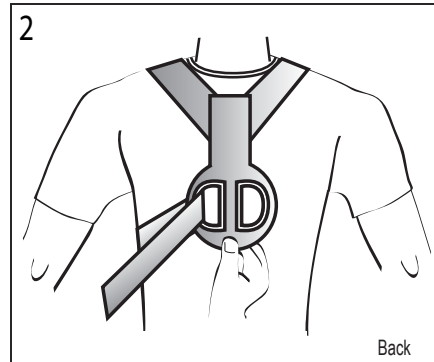
## APPLICATION INSTRUCTIONS

CP020405 Rev B 08/08

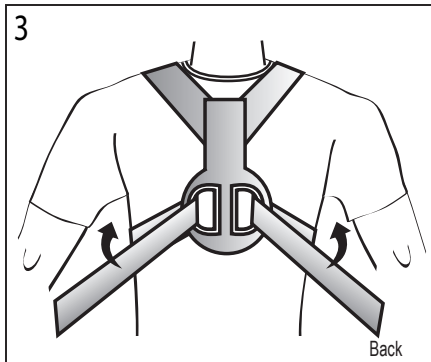
This device is offered for sale by or on the order of a physician or other qualified medical professional. This device is not intended for reuse on a second patient or for extended use beyond 180 days. This device is not intended to prevent injuries or reduce or eliminate the risk of injury.



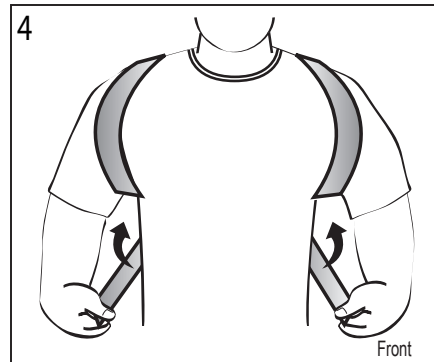
**1. Position the Brace**  
Position the D-ring pad in the center of the back and place the straps over the shoulders.



**2. Secure the Brace**  
Slide the strap through the D-ring on the unaffected side and secure. Repeat for the affected side.



**3. Adjust the Straps**  
Adjust the affected side until the shoulders maintain a normal anatomical position.



**4. Final Adjustments**  
With the patient in a resting position and shoulders back, pull both straps together to tighten. **DO NOT OVERTIGHTEN.**

**INDICATIONS:** Indicated for support of the clavicle following injury.

**CONTRAINDICATIONS:** Contraindicated for unstable fractures of the clavicle.

**WARNINGS:** Do not leave this device in the trunk of a car on a hot day or in any other place where the temperature may exceed 150°F (65°C) for any extended period of time. If any additional pain or symptoms occur while using this brace, discontinue use and seek medical attention.

**WARRANTY:** This device is warranted to be free from defects in material and workmanship for a period of 90 days. This warranty applies to devices that have not been modified or subjected to misuse, abuse or neglect. This device is expressly subject to Bledsoe's Product Line Limited Warranty. Copies of this limited warranty can be obtained from your medical professional, via the internet at [www.BledsoeBrace.com](http://www.BledsoeBrace.com), or by calling 1.888.BLEDSOE (253.3763).



Council Directive 93/42/EEC  
of 14 June 1993 concerning Medical devices

MANUFACTURED BY:  
**BLEDSOE BRACE SYSTEMS™**  
2601 Pinewood; Grand Prairie, Texas, 75051, USA  
Toll Free Tel: 1.888.BLEDSOE (253.3763) • 1.800.527.3666  
Local: 972.647.0884 • Local Fax: 972.660.5495  
International Fax: 972.606.0649  
[www.BledsoeBrace.com](http://www.BledsoeBrace.com)

EUROPEAN AUTHORIZED REPRESENTATIVE

EC

REP

EMERGO EUROPE  
Molenstraat 15  
2513 BH, The Hague  
The Netherlands  
Tel: (+31) 70 345 8570  
Fax: (+31) 70 346 7299