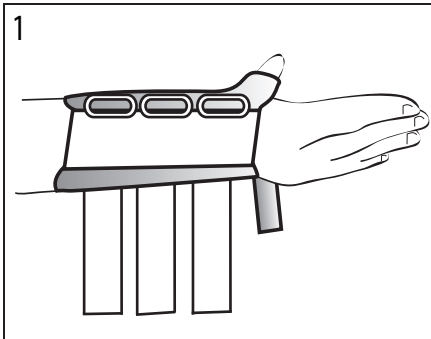


Wrist Brace with Thumb Spica

APPLICATION INSTRUCTIONS

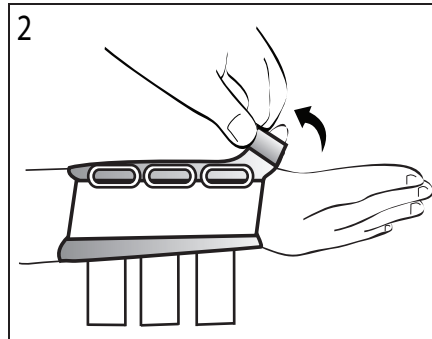
CP020421 Rev B 08/08

This device is offered for sale by or on the order of a physician or other qualified medical professional. This device is not intended for reuse on a second patient. This device is not intended to prevent injuries or reduce or eliminate the risk of injury.



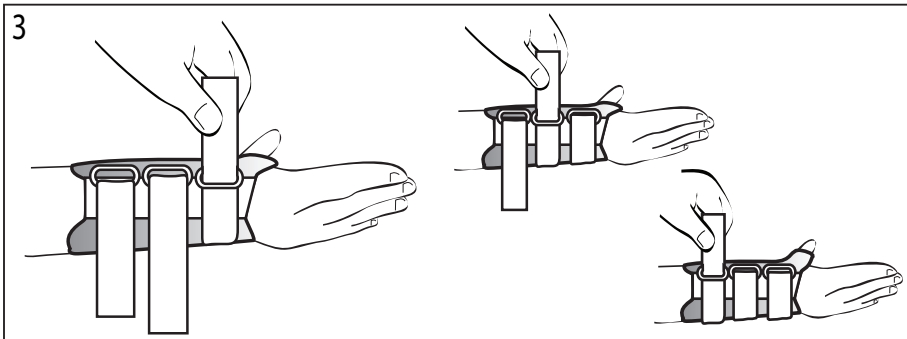
1. Position Brace

Loosen straps and slip hand into brace with the thumb resting in the abduction stay. The palmer stay should be resting on the palmer section of the hand. NOTE: Stays are malleable and may be contoured to fit the patient.



2. Secure the Thumb

Wrap the thumb strap around the thumb and secure.



3. Secure Straps

Beginning at the hand and working up the arm, feed each strap through the corresponding D-ring and secure.



Council Directive 93/42/EEC
of 14 June 1993 concerning Medical devices

INDICATIONS: Indicated for immobilization of the wrist and thumb.

CONTRAINDICATIONS: Contraindicated for unstable fractures or for fractures of the wrist.

WARNINGS: Do not leave this device in the trunk of a car on a hot day or in any other place where the temperature may exceed 150°F (65°C) for any extended period of time. If any additional pain or symptoms occur while using this brace, discontinue use and seek medical attention.

WARRANTY: This device is warranted to be free from defects in material and workmanship for a period of 90 days. This warranty applies to devices that have not been modified or subjected to misuse, abuse or neglect. This device is expressly subject to Bledsoe's Product Line Limited Warranty. Copies of this limited warranty can be obtained from your medical professional, via the internet at www.BledsoeBrace.com, or by calling 1.888.BLEDSOE (253.3763).

MANUFACTURED BY:
BLEDSOE BRACE SYSTEMS™
2601 Pinewood; Grand Prairie, Texas, 75051, USA
Toll Free Tel: 1.888.BLEDSOE (253.3763) • 1.800.527.3666
Local: 972.647.0884 • Local Fax: 972.660.5495
International Fax: 972.606.0649
www.BledsoeBrace.com

EUROPEAN AUTHORIZED REPRESENTATIVE



EMERGO EUROPE
Molenstraat 15
2513 BH, The Hague
The Netherlands
Tel: (+31) 70 345 8570
Fax: (+31) 70 346 7299